



Mr. Ranveer Singh in his house with medals and trophies

CHAPTER – IV

RESULTS AND DISCUSSION

Sports activities affect the process of personality development in ways more than one social and environmental pressures, biological factors, frustration and tension in life are to be mended with full attention to develop nature form of personality. The present case study has been to assess the personality and achievements of international volleyball player and coach Mr. Ranveer Singh.

In the present case study the level of personality, locus of control, self confidence and achievement motivation were analyzed, then the relationship within variables and relation between the variables and also relationship between the opinion of friends and relatives, opinion of the volleyball players, umpires, administrators and spectators were assessed and presented in the following tables.

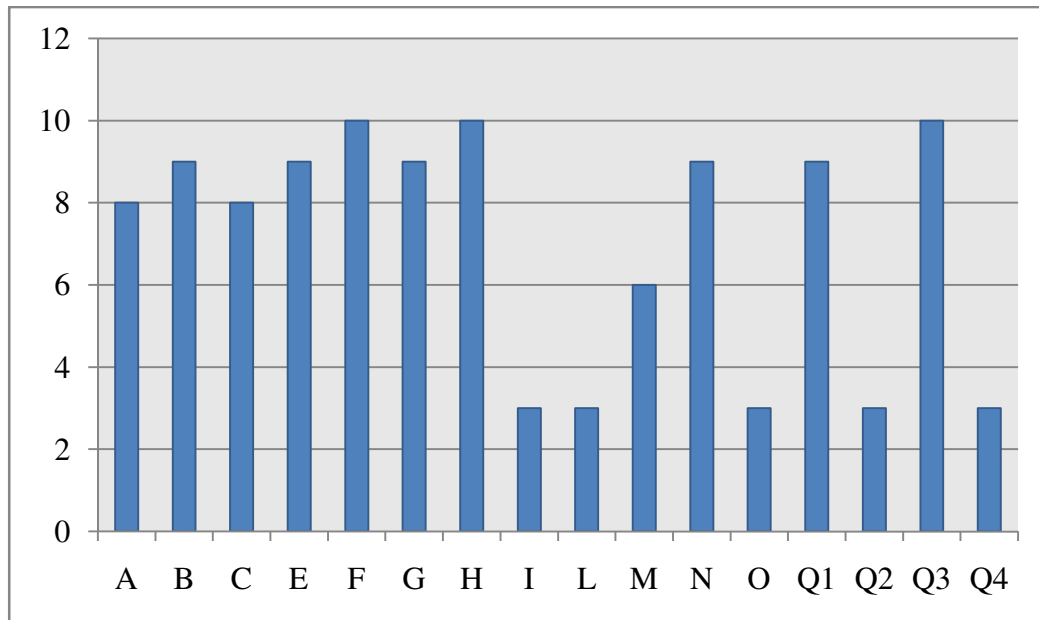
Table No. I

**ANALYSIS OF 16 PRIMARY PERSONALITY FACTORS AND
SCORES OF Mr. RANVEER SINGH
(SCORES IN POINTS)**

Sl. No.	Sixteen P.F.	Stens
1	A	8
2	B	9
3	C	8
4	E	9
5	F	10
6	G	9
7	H	10
8	I	3
9	L	3
10	M	6
11	N	9
12	O	3
13	Q1	9
14	Q2	3
15	Q3	10
16	Q4	3

According to Table No. I scores the subject have shown a tendency or inclination towards the higher direction or high sten score description in ten (A,B,C,E,F,G,H,N, Q1 and Q3) out of sixteen personality factors. The subject was average in one (M) out of the sixteen factors. Towards the lower direction or low sten score description in five (I, L, O, Q2 and Q4) out of the sixteen personality factors. The Figure No. 1 also reveals the same.

Figure – 1

**LEVEL OF SIXTEEN PERSONALITY FACTORS OF
Mr. RANVEER SINGH**

4.1 FINDINGS OF 16 PRIMARY PERSONALITY FACTORS

Factor A: Reserved Vs Outgoing

From Table No.I Factor A it was observed that Mr. Ranveer Singh scored 8 point. He tends to be good nature, easy going, emotionally expressive, ready to cooperate, attentive to people, softhearted, kindly and adaptable. He likes occupations dealing with people and socially impressive situations and he rapidly from active groups. He is generous in personal relations, less afraid of criticism, and better able to remember names of people.

Factor B: Less Intelligent Vs More intelligent

From Table No.I Factor B it was observed that Mr. Ranveer Singh scored 9 point. He tends to be quick to grasp ideas, a fast learner, intelligent. There is some correlation with level of culture, and some with alertness.

Factor C: Affected by Feelings Vs Emotionally Stable

From Table No.I Factor C it was observed that Mr. Ranveer Singh scored 8 point. He tends to be emotionally mature, stable realistic about life, unruffled, possessing ego strength, better able to maintain solid group morale.

Factor E: Submissive Vs Dominant

From Table No.I Factor E it was observed that Mr. Ranveer Singh scored 9 point. He was assertive, self assured and independent minded. He tend to be authoritarian (managing other).

Factor F: Sober Vs Enthusiastic

From Table No.I Factor F it was observed that Mr. Ranveer Singh scored 10 point. He tends to be cheerful, active, talkative, frank, expressive, effervescent and carefree. He was frequently chosen as elected leader. He may be impulsive and mercurial.

Factor G: Expedient Vs Conscientious

From Table No.I Factor G it was observed that Mr. Ranveer Singh scored 9 point. He tend be exacting in character, dominated by sense of duty, preserving, responsible, thoughtful, “fill the unforgiving minute”. He was usually conscientious and moralistic and he prefers hard working people to witty companions.

Factor H: Timid Vs Venturesome

From Table No.I Factor H it was observed that Mr. Ranveer Singh scored 10 point. He was sociable, bold ready to try new things, spontaneous and abundant in emotional response. His “thick skinned” enables them to face weal and tear in dealing with people and grueling emotional situations, without fatigue.

Factor I: Tough minded Vs Tender minded

From Table No.I Factor I it was observed that Mr. Ranveer Singh scored 3 point. He tend be tough, realistic, “down to earth”, independent, responsible but skeptical of subjective, cultural elaborations. He tends to keep a group operating on a practical and realistic “no-nonsense” basis.

Factor L: Trusting Vs Suspicious

From Table No.I Factor L it was observed that Mr. Ranveer Singh scored 3 point. He tends to be free of jealous tendencies, adaptable, cheerful, uncompetitive, concerning about others and a good team worker.

Factor M: Practical Vs Imaginative

From Table No.I Factor M it was observed that Mr. Ranveer Singh scored 6 point. He tends to be anxious to do the right things, attentive to practical matters and subject to the dictation of what is obviously possible.

Factor N: Forthright Vs Shrewd

From Table No.I Factor N it was observed that Mr. Ranveer Singh scored 9 point. He tends to be polished, experimental and shrewd. His approach to people and problems is usually perceptive, hard headed and efficient.

Factor O: Self assured Vs Apprehensive

From Table No.I Factor O it was observed that Mr. Ranveer Singh scored 3 point. He tends to be unruffled and to have unshakable nerve. He has a mature, unanxious confidence in themselves and their capacity to deal with things.

Factor Q1: Conservative Vs Experimenting

From Table No.I Factor Q1 it was observed that Mr. Ranveer Singh scored 9 point. He tends to be interested in intellectual matters and have doubts on fundamental issues. He was skeptical and inquiring ideas, either old or new. Usually he was more well informed, less inclined to moralize, more inclined to experiment in life generally and more tolerant of inconvenience and change.

Factor Q2: Group oriented Vs Self Sufficient

From Table No.I Factor Q2 it was observed that Mr. Ranveer Singh scored 3 point. He prefers to work and make decisions with other likeminded people and depend on social approval and administration.

Factor Q3: Undisciplined self conflict Vs Following self image

From Table No.I Factor Q3 it was observed that Mr. Ranveer Singh scored 10 point. He tends to have strong control of their emotions and general behaviour, are inclined to be socially aware and careful, and evidence what is commonly forced “self respect” and high regard for social reputation.

Factor Q4: Relaxed Vs Tense

From Table No.I Factor Q4 it was observed that Mr. Ranveer Singh scored 3 point. He tends to be sedate, relaxed, composed and satisfied (not frustrated).

Table No. II

**ANALYSIS OF LOCUS OF CONTROL FACTORS
SCORES OF Mr. RANVEER SINGH**

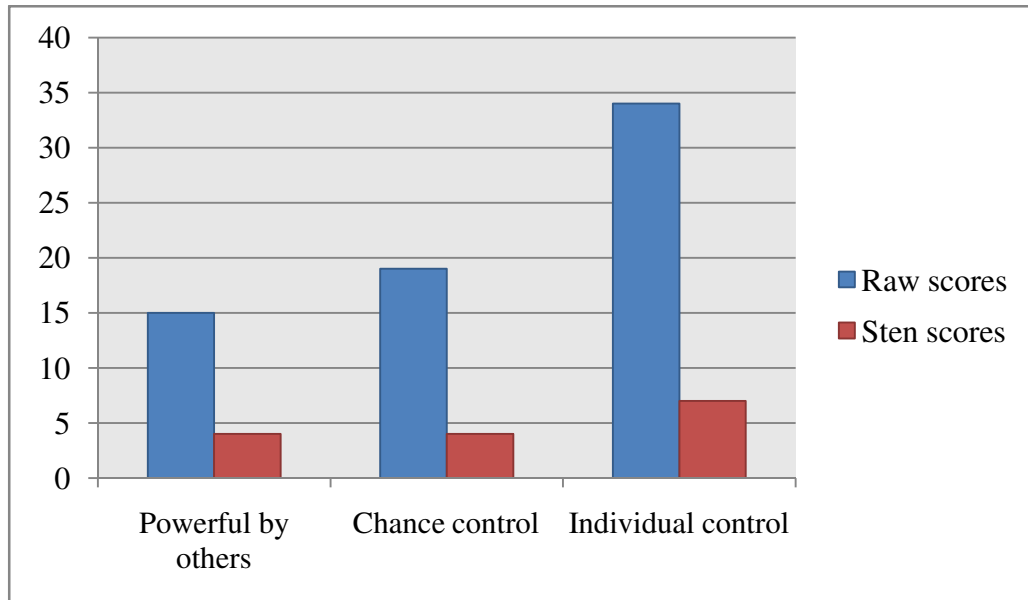
(SCORES IN POINTS)

Sl.No.	Factors	Factors name	Raw scores	Sten scores
1	P	Powerful by others	15	4
2	C	Chance control	19	4
3	I	Individual control	34	7

Table No. II presents the scores of locus of control factors. The scores early indicate that the subject having lower strength in powerful by others (15) a chance control (19) factors. The scores of individual control (34) clearly indicate that Mr. Ranveer Singh having greater strength in this factor.

The figure 2 also reveals the same.

Figure – 2

LEVEL OF LOCUS OF CONTROL OF Mr. RANVEER SINGH

4.2 FINDINGS OF LOCUS OF CONTROL FACTORS

P - Belief about control by powerful others

The other people will not control Mr. Ranveer Singh out comes. The scores indicate that Mr. Ranveer Singh has the lower strength of the factors powerful others (P).

C - Belief about chance control

The unordered, chance, or random events will not control Mr. Ranveer Singh out comes. The scores indicate that Mr. Ranveer Singh has the lower strength of the factor chance control (C).

I - Belief about individual control

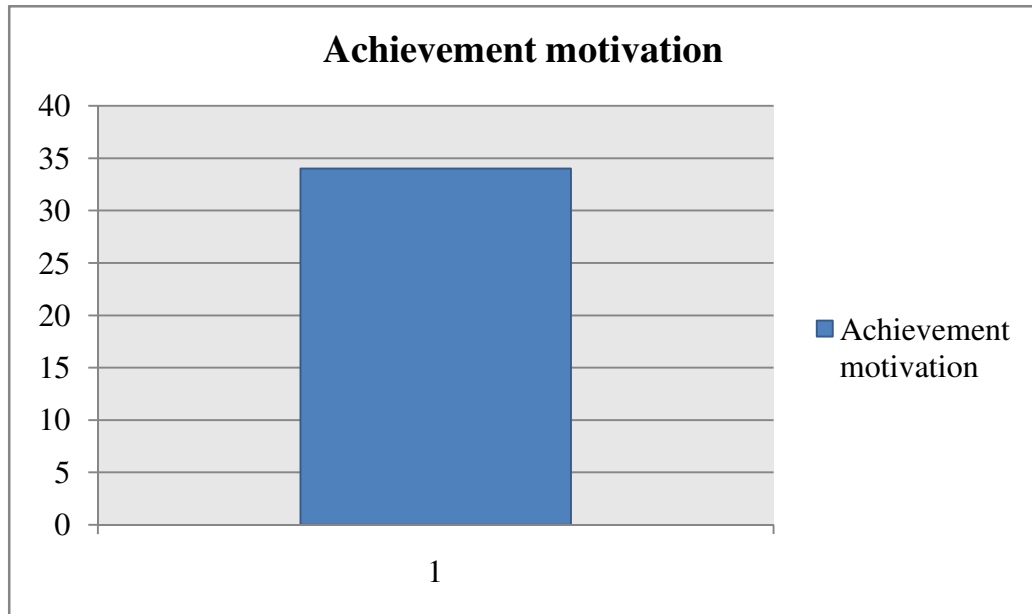
Mr. Ranveer Singh believes that his outcomes are controlled by him that his current situations and his rewards are direct outcomes of things of controls. The scores indicate that Mr. Ranveer Singh has the greater strength of the factor individual control (I).

Table No. III**ANALYSIS OF ACHIEVEMENT MOTIVATION
SCORES OF Mr. RANVEER SINGH
(SCORES IN POINTS)**

Sl. No.	Variables Name	Score
1	Achievement motivation	34

Table No.III presents the score of achievement motivation. The score (34) clearly indicates that the Mr. Ranveer Singh having high level of achievement motivation. The Figure 3 also reveals the same.

Figure – 3

LEVEL OF ACHIEVEMENT MOTIVATION OF Mr. RANVEER SINGH**4.3 FINDINGS OF ACHIEVEMENT MOTIVATION**

Mr. Ranveer Singh having high Achievements Motivation (NACH). The high scores refer to outstanding performances worth appreciable and mentioning.

Table No. IV**ANALYSIS OF SELF CONFIDENCE SCORES
OF Mr. RANVEER SINGH
(SCORES IN POINTS)**

Sl. No.	Variables Name	Score	Category
1	Self confidence	16	High level

Table No. 1V presents the score of self confidence. The score (16) clearly indicates that the Mr. Ranveer Singh having level of self confidence. The Figure 4 also reveals the same.

Figure – 4

LEVEL OF CONFIDENCE OF Mr. RANVEER SINGH

4.4 FINDINGS OF SELF CONFIDENCE

The score 16 clearly indicates that Mr. Ranveer Singh having Level of Self confidence.

4.5 ANALYSIS OF CORRELATION WITHIN THE VARIABLES FACTORS AND BETWEEN THE VARIABLES

Here the researcher analyzed the correlation within variable factors and also between the factors of two variables. The variables are personality, locus of control, achievement motivation and self confidence. The analysis of correlation within the variable factors and also between the variables is done by using the Pearson's bivariate formula and presented in the following tables and figures.

Table No. V
CORRELATION (r-values) WITHIN SIXTEEN PRIMARY PERSONALITY FACTORS OF Mr. RANVEER SINGH

	A	B	C	E	F	G	H	I	L	M	N	O	Q1	Q2	Q3	Q4	M
A	1	.669	.986	.843	.819	.915	.996	.921	.915	.881	.986	.989	.947	.823	.911	.920	.908
B		1	.924	.855	.900	.766	.944	.968	.970	.698	.929	.958	.990	.915	.812	.973	.907
C			1	.921	.970	.883	.712	.901	.991	.986	.998	.971	.905	.987	.985	.699	.922
E				1	.965	.911	.801	.959	.799	.915	.981	.968	.912	.949	.981	.986	.933
F					1	.886	.972	.913	.699	.901	.924	.966	.681	.988	.927	.901	.897
G						1	.951	.962	.969	.689	.977	.786	.991	.976	.905	.929	.921
H							1	.899	.915	.907	.682	.790	.941	.990	.925	.911	.896
I								1	.872	.914	.921	.902	.692	.699	.714	.981	.855
L									1	.910	.973	.901	.926	.899	.909	.910	.929
M										1	.986	.872	.974	.900	.909	.977	.945
N											1	.968	.970	.988	.919	.998	.974
O												1	.925	.972	.981	.901	.956
Q1													1	.986	.902	.911	.950
Q2														1	.905	.914	.940
Q3															1	.802	.901
Q4																1	1
M																	1

** Correlation is signification at the 0.01 level (2 tailed)

A –outgoing, B-more intelligent, C-emotionally stable, E-Dominant, F-Enthusiastic, G-Conscientious, H-Bold, I-Tough Minded, L- Trusting, M-Imaginative, N-Shrewd, O-Self Assured, Q1-Experimenting, Q2-Group oriented, Q3-Self Image, Q4-Relaxed, M-Mean of sixteen primary personality factors.

Table No.V presents the correlation within the sixteen primary personality factors significant at 0.01 level. Thus the significant r-values clearly indicate that there is a positive and strong relationship within these sixteen primary personality factors.

1. The primary personality factor like “A-out going” has the strong correlation with primary personality factors like B-more intelligent, C-Emotionally Stable, E-Dominant, F-Enthusiastic, G-Conscientious, H-Bold, I-Tough Minded, L-Trusting, M-Practical, N-Shrewd, O-Self Assured, Q1- Experimenting, Q2-Group oriented, Q3-Self Image and Q4-Relaxed.
2. Similarly, the primary personality factor like “B-More Intelligent” is found to have a positive relationship with A-out going, C-Emotionally Stable, E-Dominant, F-Enthusiastic, G-Conscientious, H-Bold, I-Tough Minded, L-Trusting, M-Practical, N-Shrewd, O-Self Assured, Q1- Experimenting, Q2-Group oriented, Q3-Self Image and Q4-Relaxed.
3. The primary personality factor like “C-Emotionally Stable” has the strong correlation with primary personality factors like A-out going, B-More Intelligent , E-Dominant, F-Enthusiastic, G-Conscientious, H-Bold, I-Tough Minded, L-Trusting, M-Practical, N-Shrewd, O-Self Assured, Q1- Experimenting, Q2-Group oriented, Q3-Self Image and Q4-Relaxed.
4. Similarly, the primary personality factor like “E-Dominant” is found to have a positive relationship with A-out going, B-more Intelligent C-Emotionally Stable, E-Dominant, F-Enthusiastic, G-Conscientious, H-Bold, I-Tough Minded, L-Trusting, M-Practical, N-Shrewd, O-Self Assured, Q1- Experimenting, Q2-Group oriented, Q3-Self Image and Q4-Relaxed.

5. The primary personality factor like “F-Enthusiastic” has the strong correlation with primary personality factors like A-out going, B-More Intelligent , E-Dominant, F-Enthusiastic, G-Conscientious, H-Bold, I-Tough Minded, L-Trusting, M-Practical, N-Shrewd, O-Self Assured, Q1- Experimenting, Q2-Group oriented, Q3-Self Image and Q4-Relaxed.
6. The primary personality factor like “G-Conscientious” has the strong correlation with primary personality factors like A-out going, B-More Intelligent , E-Dominant, F-Enthusiastic, G-Conscientious, H-Bold, I-Tough Minded, L-Trusting, M-Practical, N-Shrewd, O-Self Assured, Q1- Experimenting, Q2-Group oriented, Q3-Self Image and Q4-Relaxed.
7. The primary personality factor like “H-Bold” has the strong correlation with primary personality factors like A-out going, B-More Intelligent , E-Dominant, F-Enthusiastic, G-Conscientious, H-Bold, I-Tough Minded, L-Trusting, M-Practical, N-Shrewd, O-Self Assured, Q1- Experimenting, Q2-Group oriented, Q3-Self Image and Q4-Relaxed.
8. Similarly, the primary personality factor like “I-Tough Minded” is found to have a positive relationship with A-out going, B-more Intelligent C-Emotionally Stable, E-Dominant, F-Enthusiastic, G-Conscientious, H-Bold, I-Tough Minded, L-Trusting, M-Practical, N-Shrewd, O-Self Assured, Q1- Experimenting, Q2-Group oriented, Q3-Self Image and Q4-Relaxed.
9. Similarly, the primary personality factor like “L-Trusting” is found to have a positive relationship with A-out going, B-more Intelligent C-Emotionally Stable, E-Dominant, F-Enthusiastic, G-Conscientious, H-Bold, I-Tough Minded, L-Trusting, M-Practical, N-Shrewd, O-Self Assured, Q1- Experimenting, Q2-

Group-oriented, Q3-Self Image and Q4-Relaxed.

10. Similarly, the primary personality factor like “M-Practical” is found to have a positive relationship with A-out going, B-more Intelligent C-Emotionally Stable, E-Dominant, F-Enthusiastic, G-Conscientious, H-Bold, I-Tough Minded, L-Trusting, M-Practical, N-Shrewd, O-Self Assured, Q1- Experimenting, Q2-Group oriented, Q3-Self Image and Q4-Relaxed.
11. Similarly, the primary personality factor like “N-Shrewd” is found to have a positive relationship with A-out going, B-more Intelligent C-Emotionally Stable, E-Dominant, F-Enthusiastic, G-Conscientious, H-Bold, I-Tough Minded, L-Trusting, M-Practical, N-Shrewd, O-Self Assured, Q1- Experimenting, Q2-Group oriented, Q3-Self Image and Q4-Relaxed.
12. Similarly, the primary personality factor like “O-Self Assured” is found to have a positive relationship with A-out going, B-more Intelligent C-Emotionally Stable, E-Dominant, F-Enthusiastic, G-Conscientious, H-Bold, I-Tough Minded, L-Trusting, M-Practical, N-Shrewd, O-Self Assured, Q1- Experimenting, Q2-Group oriented, Q3-Self Image and Q4-Relaxed.
13. Similarly, the primary personality factor like “Q1-Experimenting” is found to have a positive relationship with A-out going, B-more Intelligent C-Emotionally Stable, E-Dominant, F-Enthusiastic, G-Conscientious, H-Bold, I-Tough Minded, L-Trusting, M-Practical, N-Shrewd, O-Self Assured, Q1- Experimenting, Q2-Group oriented, Q3-Self Image and Q4-Relaxed.
14. Similarly, the primary personality factor like “Q2-Group Oriented” is found to have a positive relationship with A-out going, B-more Intelligent C-Emotionally Stable, E-Dominant, F-Enthusiastic, G-Conscientious, H-Bold, I-Tough Minded,

L-Trusting, M-Practical, N-Shrewd, O-Self Assured, Q1- Experimenting, Q2 Group oriented, Q3-Self Image and Q4-Relaxed.

15. Similarly, the primary personality factor like “Q3-Self Image” is found to have a positive relationship with A-out going, B-more Intelligent C-Emotionally Stable, E-Dominant, F-Enthusiastic, G-Conscientious, H-Bold, I-Tough Minded, L-Trusting, M-Practical, N-Shrewd, O-Self Assured, Q1- Experimenting, Q2-Group oriented, Q3-Self Image and Q4-Relaxed.
16. Similarly, the primary personality factor like “Q4-Relaxed” is found to have a positive relationship with A-out going, B-more Intelligent C-Emotionally Stable, E-Dominant, F-Enthusiastic, G-Conscientious, H-Bold, I-Tough Minded, L-Trusting, M-Practical, N-Shrewd, O-Self Assured, Q1- Experimenting, Q2-Group oriented, Q3-Self Image and Q4-Relaxed.
17. Similarly, the mean of sixteen primary personality factors is found to have a positive relationship with A-out going, B-more Intelligent C-Emotionally Stable, E-Dominant, F-Enthusiastic, G-Conscientious, H-Bold, I-Tough Minded, L-Trusting, M-Practical, N-Shrewd, O-Self Assured, Q1- Experimenting, Q2-Group oriented, Q3-Self Image and Q4-Relaxed. Thus the figure 5 also reveals the same correlation.

Table No. VI**CORRELATION (r-values) WITHIN LOCUS OF CONTROL FACTORS OF
Mr. RANVEER SINGH (SCORES IN POINTS)**

	Powerful by others	Chance control	Individual control	Mean Locus of control
Powerful by others	1	.976	.289	.755
Chance control		1	.493	.747
Individual control			1	1
Mean				1

* Correlation is significant at the 0.05 level (2 tailed)

Table No.VI presents the correlation within the locus of control factors significant at 0.05 level. Thus the significant r-value (0.976) of LOC factor like powerful by other clearly indicates that there is a positive and strong relationship with locus of control factor like chance control, but there is no significant correlation between powerful by others and individual control, mean of LOC, also the r-values (0.755 and 0.747) reveals the same.

Similarly, the significant r-values (0.976) of locus of control factor like change control clearly indicates that there is a positive and strong relationship with mean of locus of control factors, but there is no significant correlation between chance control and individual control, also the r-value (0.493) reveals the same. Similarly, there is no significant correlation between individual control and mean of LOC, also the r-value reveals the same.

Thus the figure 6 also reveals the same correlation.

Figure – 6

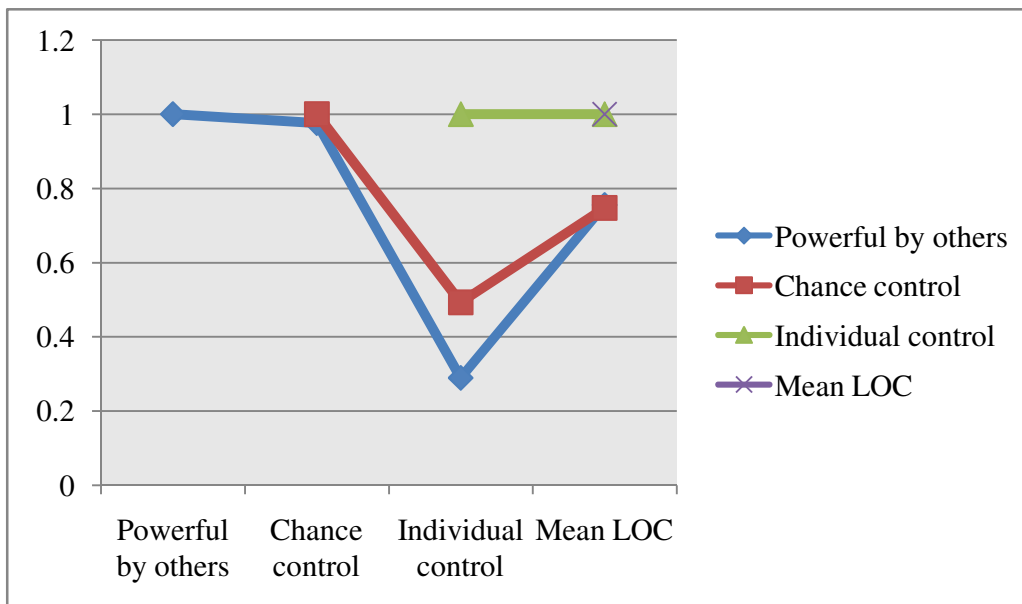
**LEVEL OF CORRELATION (r-values) WITHIN LOCUS OF CONTROL
FACTORS OF Mr. RANVEER SINGH**

Table No. VII

**CORRELATION (r-values) BETWEEN SIXTEEN PRIMARY
PERSONALITY FACTORS AND LOCUS OF CONTROL
FACTORS OF Mr. RANVEER SINGH
(SCORES IN POINTS)**

	Powerful by other	Chance control	Individual control	LOC Mean
Outgoing	.938	.902	.819	.886
More intelligent	.946	.913	.933	.931
Emotionally stable	.938	.902	.819	.886
Dominant	.946	.913	.933	.931
Enthusiastic	.955	.923	.848	.909
Conscientious	.946	.913	.833	.897
Bold	.955	.923	.848	.909
Tough minded	.886	.840	.739	.822
Trusting	.886	.840	.739	.822
Imaginative	.919	.878	.788	.862
Shrewd	.946	.913	.833	.897
Self assured	.886	.840	.739	.822
Experimenting	.946	.913	.988	.949
Group oriented	.886	.840	.739	.822
Self image	.955	.923	.848	.909
Relaxed	.886	.840	.739	.822
SPF Mean	.926	.889	.824	.880

Table No. VII Presents the correlation between sixteen primary personality factors and locus of control factors significant at 0.01 level. Thus the significant r-values clearly indicate that there is a positive and strong relationship between sixteen primary personality factors and locus of control factors.

The sixteen primary personality factors like A outgoing, B-more Intelligent, E-Emotionally Stable, E-Dominant, F-Enthusiastic, G-Conscientious, H-Bold, I-Tough Minded, L-Trusting, M-Practical, N-Shrewd, O-Self assured, Q1-Experimenting, Q2-Group oriented, Q3-Self Image and Q4-Relaxed are having the strong correlation with locus of control factor like powerful by others, chance control and individual control.

Similarly, the mean of sixteen primary personality factors is found to have a positive relationship with all the locus of control factors and also with its mean value.

Thus the Figure 7 also reveals the same correlation.

Figure – 7

LEVEL OF CORRELATION (r-values) BETWEEN SIXTEEN PRIMARY PERSONALITY FACTORS AND LOCUS OF CONTROL FACTORS OF Mr. RANVEER SINGH

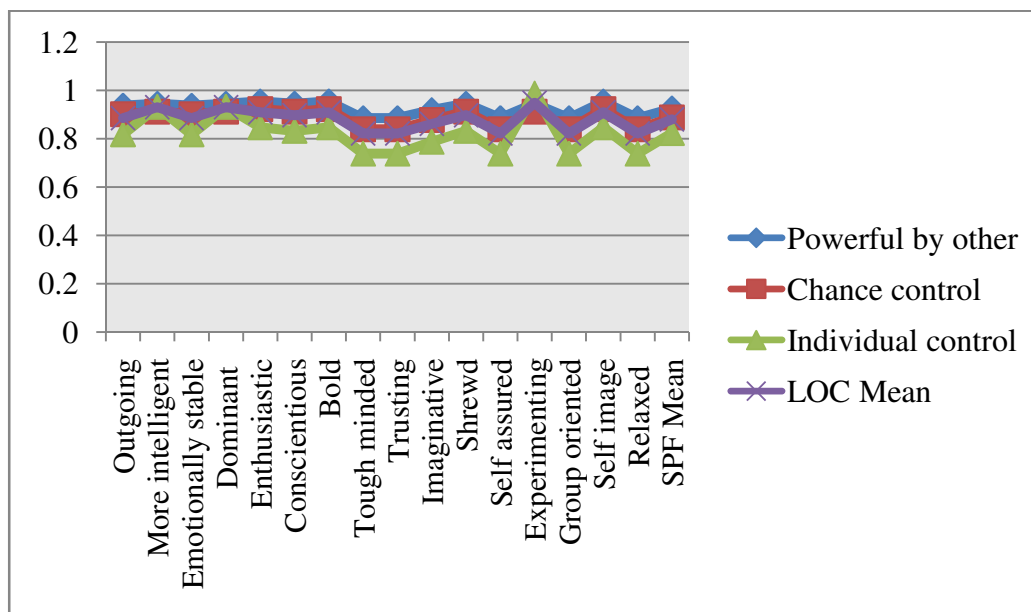


Table No. VIII

**CORRELATION (r-values) BETWEEN SIXTEEN PRIMARY PERSONALITY
FACTORS AND ACHIEVEMENT MOTIVATION
OF Mr. RANVEER SINGH
(SCORES IN POINTS)**

S.P.F.	Achievement motivation
Outgoing	.475
More intelligent	.547
Emotionally stable	.475
Dominant	.547
Enthusiastic	.613
Conscientious	.547
Bold	.613
Tough minded	.081
Trusting	.081
Imaginative	.319
Shrewd	.547
Self assured	.081
Experimenting	.547
Group oriented	.081
Self image	.613
Relaxed	.081
SPF Mean	.391

* Correlation is significant at the 0.05 level (2 tailed)

** Correlation is significant at the 0.01 level (2 tailed)

Table No. VIII Presents the correlation between sixteen primary personality factors and achievement motivation factors significant at 0.01 and 0.05 level. Thus the significant r-values clearly indicate that there is a positive and strong relationship between sixteen primary personality factors and achievement motivation factors.

The sixteen primary personality factors like A outgoing, B-more Intelligent, E-Emotionally Stable, E-Dominant, F-Enthusiastic, G-Conscientious, H-Bold, I-Tough Minded, L-Trusting, M-Practical, N-Shrewd, O-Self assured, Q1-Experimenting, Q2-Group oriented, Q3-Self Image clearly indicate there is a positive and strong correlation with achievement motivation like goal significant at 0.01 and 0.05 level.

Similarly, the sixteen primary personality factors like I- tough L-trusting M-practical O-self assured.

Q2 group oriented Q4 relaxed and mean of sixteen primary personality factor r-value seems to be significant but there is a in significant correlation with achievement motivation.

Thus the Figure 8 also reveals the same correlation.

Figure – 8

LEVEL OF CORRELATION (r-values) BETWEEN SIXTEEN PRIMARY PERSONALITY FACTORS AND ACHIEVEMENT MOTIVATION OF Mr. RANVEER SINGH

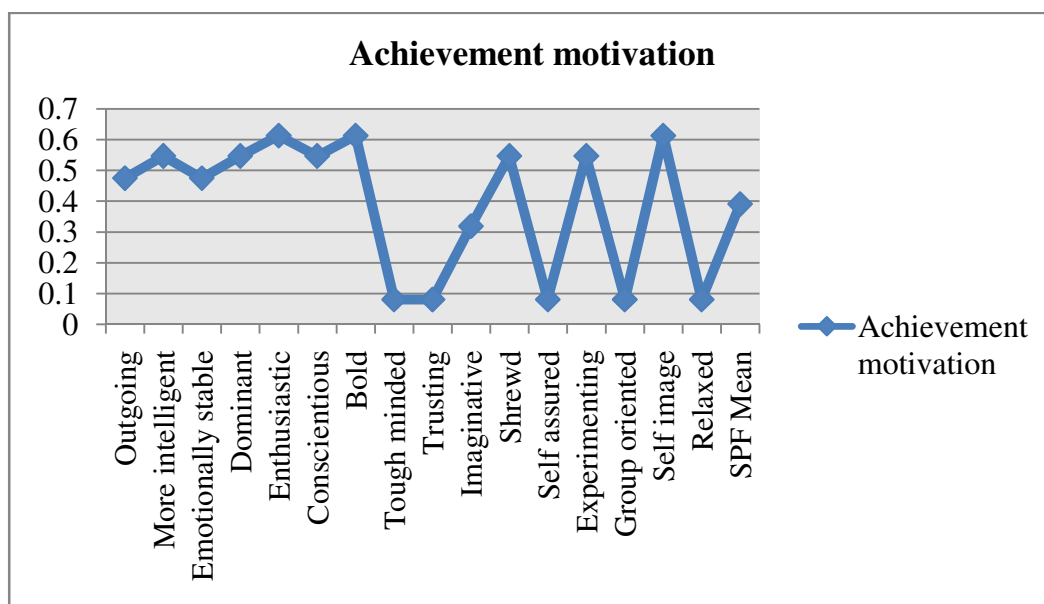


Table No. IX

**CORRELATION (r-values) BETWEEN SIXTEEN PRIMARY
PERSONALITY FACTORS AND SELF CONFIDENCE
OF Mr. RANVEER SINGH
(SCORES IN POINTS)**

	Self Confidence
Outgoing	.842
More intelligent	.884
Emotionally stable	.842
Dominant	.884
Enthusiastic	.919
Conscientious	.884
Bold	.919
Tough minded	.555
Trusting	.555
Imaginative	.739
Shrewd	.884
Self assured	.555
Experimenting	.884
Group oriented	.555
Self image	.919
Relaxed	.555
SPF Mean	.773

Correlation is significant at the 0.05 level (2 tailed)

Correlation is significant at the 0.01 level (2 tailed)

Table No. IX presents the correlation between sixteen primary personality factors and self confidence factors significant at 0.01 and 0.5 level. Thus the significant r-values clearly indicate that there is a positive and strong relationship between sixteen primary personality factors and self confidence.

The sixteen primary personality factors like A outgoing, B-more Intelligent, E-Emotionally Stable, E-Dominant, F-Enthusiastic, G-Conscientious, H-Bold, I-Tough Minded, L-Trusting, M-Practical, N-Shrewd, O-Self assured, Q1-Experimenting, Q2-Group oriented, Q3-Self Image and Q4-Relaxed are having the strong correlation with self confidence.

Similarly, the mean of sixteen primary personality factors is found to have a positive relationship with the self confidence.

Thus the figure 9 also reveals the same correlation.

Figure -9

LEVEL OF CORRELATION (r-values) BETWEEN SIXTEEN PRIMARY PERSONALITY FACTORS AND SELF CONFIDENCE OF Mr. RANVEER SINGH

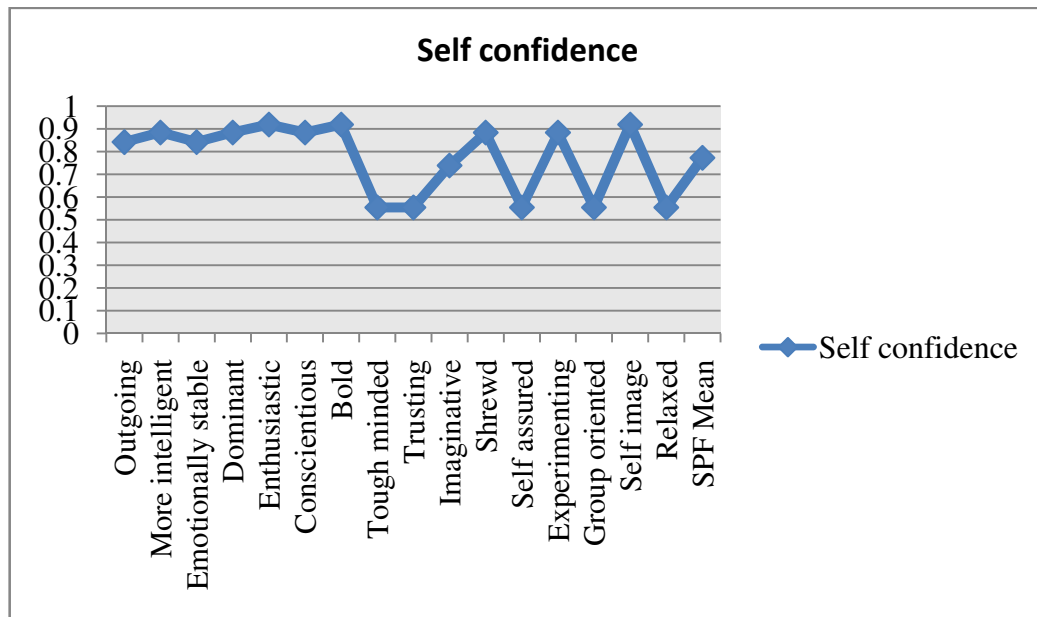


Table No. X

**CORRELATION (r-values) BETWEEN LOCUS OF CONTROL
FACTORS, ACHIEVEMENT MOTIVATION AND
SELF CONFIDENCE OF Mr. RANVEER SINGH
(SCORES IN POINTS)**

	Achievement motivation	Self confidence
Powerful by others	.759	.958
Chance control	.890	.865
Individual control	1.000	.541
LOC Mean	.883	.788

* Correlation is significant at the 0.05 level (2 tailed)

* * Correlation is significant at the 0.01 level (2 tailed)

Table No. X presents the correlation between locus of control, achievement motivation factor and self confidence factors significant at 0.01 and 0.05 level. Thus the significant r-values of locus of control like chance control, individual control and mean value of locus of control factor clearly indicate that there is a positive and strong relationship with achievement motivation.

Similarly, locus of control factor like individual control r-value seems to be significant, but there is no significant correlation with achievement motivation.

Thus the significant r-values of locus of control factors like chance control, individual control and locus of control factors mean clearly indicate that there is a positive and strong relationship with self confidence.

Similarly, locus of control factor like individual control r-value seems to be significant, but there is no significant correlation with self confidence.

Thus the figure 10 also reveals the same correlation.

Figure -10

LEVEL OF CORRELATION (r-values) BETWEEN LOCUS OF CONTROL FACTORS, ACHIEVEMENT MOTIVATION AND SELF CONFIDENCE OF Mr. RANVEER SINGH

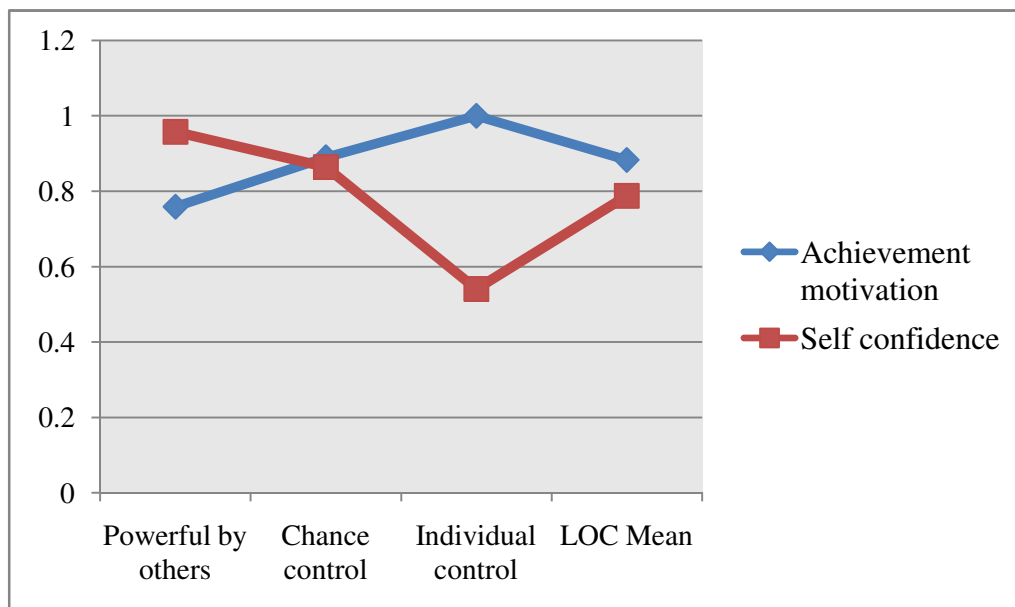


Table No. XI**CORRELATION (r-values) BETWEEN ACHIEVEMENT MOTIVATION
AND SELF CONFIDENCE OF Mr. RANVEER SINGH
(SCORES IN POINTS)**

Variable	Self confidence
Achievement motivation	.500

* Correlation is significant at the 0.05 level (2 tailed)

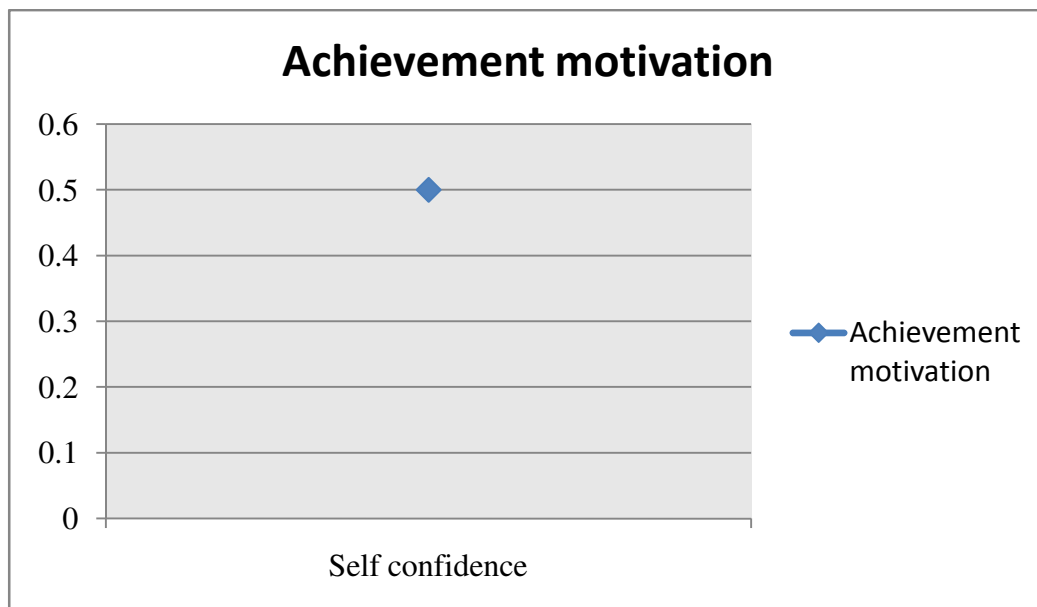
Table No. XI presents the significant correlation between the achievement motivation and self confidence.

Thus the significant r-value clearly indicates the positive and strong relationship between the level of achievement motivation and self confidence.

Thus the figure 11 also reveals the same correlation.

Figure – 11

**LEVEL OF CORRELATION (r values) BETWEEN ACHIEVEMENT
MOTIVATION AND SELF CONFIDENCE OF
Mr. RANVEER SINGH**



**ANALYSIS OF CORRELATION BETWEEN RELATIVES AND FRIENDS
OPINION ABOUT THE Mr. RANVEER SINGH**

Table No. XII

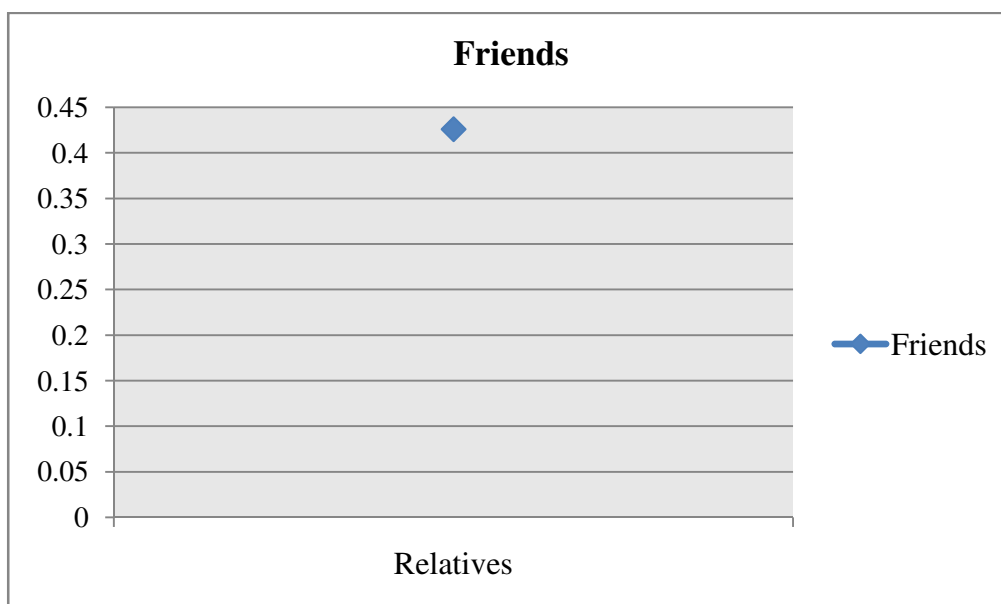
**Correlation (r-values) between relatives and friends opinion about
Mr. Ranveer Singh (N=24)
(Scores in Points)**

	Relatives
Friends	0.426

* Correlation is significant at the 0.05 level (2 tailed)

Table No. XII presents the significant correlation between the relatives and friends opinion. Thus the significant r-value clearly indicates the positive and strong relationship between the relatives and friends opinion about the volleyball player. This implies the respondents showed favorable opinion towards Mr. Ranveer Singh.

Figure – 12

LEVEL OF CORRELATION (r-values) BETWEEN RELATIVES AND FRIENDS OPINION ABOUT Mr. RANVEER SINGH (N=24)

**ANALYSIS OF CORRELATION BETWEEN VOLLEYBALL PLAYERS,
UMPIRES, ADMINISTRATORS AND SPECTATORS OPINION ABOUT
Mr. RANVEER SINGH**

Table No. XIII

**Correlation (r-values) between Volleyball players, Umpires, Administrators
and Spectators opinion about Mr. Ranveer Singh (N=60)
(Scores in Points)**

Sl.No.		Volleyball player	Umpires	Administrators	Spectators
1.	Volleyball players	1	.587	.611	.580*
2.	Umpires		1	.672*	.602*
3.	Administrators			1	.568*
4.	Spectators				1

Table No. XIII presents the significant correlation between the volleyball player, umpires, administrators and spectators opinion. Thus the significant r-values clearly indicate the positive and strong relationship between the volleyball players, umpires, administrators and spectators opinion about Mr. Ranveer Singh.

This implies the respondents showed favorable opinion towards Mr. Ranveer Singh.

**ANALYSIS OF OPINION SCORES OF VOLLEYBALL PLAYERS,
UMPIRES, ADMINSTRATORS AND SPECTATORS ABOUT
Mr. RANVEER SINGH
(SCORES IN POINTS)**

Table No. XIV

Opinion scores of Volleyball players and Umpires

Volleyball players	M	63.46
	SD	2.58
Umpires	M	63.73
	SD	1.33
t-value	0.721	

Significant at 0.01 level

Table No. XV

Opinion scores of Volleyball players and Administrators

Volleyball players	M	63.46
	SD	2.58
Administrators	M	63.53
	SD	1.18
t-value	0.191	

Significant at 0.01 level

Table No. XVI

Opinion scores of Volleyball players and Spectators

Volleyball players	M	63.73
	SD	1.33
Spectators	M	64.26
	SD	1.38
t-value	2.142	

Significant at 0.01 level

Table No. XV11
Opinion scores of Umpires and Administrators

Umpires	M	63.73
	SD	1.33
Administrators	M	63.53
	SD	1.18
t-value	0.871	

Significant at 0.01 level

Table No. XVIII
Opinion scores of Umpires and Spectators

Umpires	M	63.73
	SD	1.33
Spectators	M	64.26
	SD	1.38
t-value	2.142	

Significant at 0.01 level

Table No. XIX
Opinion scores of Administrators and Spectators

Administrators	M	63.53
	SD	1.18
Spectators	M	64.26
	SD	1.38
t-value	3.114	

Significant at 0.01 level

Table No. XIV, XV, XVI, XVII, XVIII and XIX present the mean, standard deviation and t-values of opinion scores of volleyball players, umpires, administrators and spectators about Mr.Ranveer Singh. Thus the t-values of volleyball players and umpires (0.721), volleyball players and administrators (0.191), volleyball players and spectators (2.142), umpires and administrators (0.871), umpires and spectators (2.142) are clearly indicates no significant difference opinion between volleyball players, umpires, administrators and spectators about Mr.Ranveer Singh. Only administrators and spectators (3.114) are indicating significant difference.

This implies the respondent showed favorable opinion towards Mr.Ranveer Singh.

4.6 RANVEER SINGH MEASURED

By these results one should understand that there is no neither confusion nor conflict in the personality of Mr.Ranveer Singh. Secondly, these findings also depict the openness of the person, clarity of goals, mobility in values, high achievement motivation, high self confidence, greater strength of internal locus of control (individual control),and greater strength in mental flexibility etc., which are the possible traits of a highly evolved and nicely socialized individual.

As observed by his family members and close associate through these qualities are mentioned but many of qualities are inherent in the opinion of Mr.Ranveer Singh relatives and friends. His close associates have noted that he was very serious, sincere, helpful, confident, social organizing person with noble values. A brief descriptive profile and achievement is as follows.

A BRIEF PROFILE AND ACHIEVEMENT OF INTERNATIONAL VOLLEYBALL PLAYER Mr. RANVEER SINGH

BIRTH

Mr.Ranveer Singh was born on 12th February 1951 at Village Simbhalka, Post Shamli, District, Muzzafar Nagar State, (Uttar Pradesh), India. Highly cultured, evolved and respectful family belonging to a Jat community.

Mr.Ranveer Signh was very cute, smart and happy and darling child of Mrs. & Mr. Late Om Singh. He had a tradition and heritage of volleyball players in his family, his relatives were volleyball players of some reputation. Naturally he emulated and followed in the footsteps of his senior family members and become a great volleyball player. In various districts of U.P., his natural talents were nicely groomed to make him an international volleyball player and administrator and also coach.

SCHOOL DAYS

He was admitted to Gandhi Inter College Khekra Bhagwat (U.P) and he represented his country in national team that traveled to foreign many times. This is a school where many volleyball players were groomed, Mr.Ranveer Singh had required positive attitude and aptitude towards volleyball, very naturally. In the school Mr. Ranveer Singh was attentive and was able to learn quickly whatever was taught in the class room. Almost he stood first in the class as on the ground. Mr.Ranveer Singh continued high school education at same college and finished intermediate with good grades.

He was a young person bubbling with energy, enthusiasm and talent to become a great volleyball player. During this period he was able, guided by physical education teachers. In school itself he was busy with playing school level tournaments and he was instrumental in winning the matches for his team.

According to Shyam Sunder Rao his friend Mr.Ranveer Singh was an extrovert, highly sociable and always mingled with friends with a broad smile and good words for them. During play time he did not use to go to movies. Besides being a sincere, studious and disciplined student, he also practiced volleyball very sincerely and regularly under volleyball coach A. Ramanna Rao.

By nature he was jolly, helpful and generous to all sorts of people. He had numerous friends. He used to lead and organize volleyball tournament in holidays. Mr.Ranveer Singh, with his good sense of humor, would generate praises from his friends; he was very open-minded and confident. He had intimacy with his friends. At the same time he gives lot of respect to his teachers, elders, seniors and coaches very humbly. He was concerned with other's welfare and worked without any expectation with philanthropic attitude.

VOLLEYBALL CARRIER AND ACHIEVEMENT

He was also a chief coach of Indian police volley ball team He became the topmost player of volley ball in U.P .and represented the team as a captain. He won many matches. He also represented India team and U.P. police team. He played with Burma first time in 1971

Mr.Ranveer Singh was a dashing, a prolific smasher and an outstanding all rounder. He played excellent at attack zone and back zone in the seventies. He was at his peak in the prime of his life. During his childhood period he had no object that what he would become in future. But the luck struck him and he became one of the topmost volley ball players. For a long time he held the three most important records: Common wealth volleyball championship and won bronze medal in1981 Gold medal in all India 1975 and 1979. In his prosperous days, he played some of the most commanding skills in the national and international competition.

Mr.Ranveer Singh has overcome all the obstacles in his quest for greatness and he played for his country and not for his own records. In the team he respected all the senior players, he calm down the tension of his colleagues during the matches and also encouraged the team. He cooperated with all the members of the team. He accepts immediately when the umpires give him fall and he never tried to cheat or query with the umpires. But he tried to be friendly with the umpires. He was not ill-tempered, he does not feel superiority complex among his friends. He was even friendly with the members of the opponent team on the field.

ADMINISTRATOR/COACH

In office, he was punctual and he has a high degree of sincerity and believes people around him, he always listens and talks less and also he has a lot of patience and bold enough to overcome the obstacles. It is not an easy task to understand such a great personality. He works sincerely and does not take any advantage of his position, he involves in every decision making in his office and also he uses his popularity in improving the position of the company. He gives respect to all his seniors. He has a habit of reading, interested in music, dance, and social service and does not smoke and also does not love cock tail parties. He does not pay value to money and he was found of praises.

At present he is observer of PANCHAYAT YUVA KRIDA KHEL ABHIYAN, Government of India.

ACHIEVEMENTS OF MR. RANVEER SINGH

YEAR	AWARDS / ACHIEVEMENTS
1970-85	Member/Captain U.P Volleyball team in the National Championship
1971	Against Burma Volleyball team
1972-96	Member/Captain U.P Police Volleyball team in Indian Police game
1974	LAXMAN AWARD (Government of Uttar Pradesh)
1975	ARJUNA AWARD (Government of India)
1974	7 th Asian games Teheran (Iran)
1975	Gold medalist captain of U.P. Volleyball team in the Nationals
1978	Against France Volleyball team
1978	8th Asian games Bangkok (Thailand)
1979	Captain Indian Volleyball team (1979-81)
1979	Gold Medalist of All India Police games
1979	Asian Volleyball championship Bahreen (Captain)
1980	Against U.S.S.R. Volleyball team (Captain)
1981	Against Australia Volleyball team (Captain)
1981	Moscow U.S.S.R. Tour
1981	Srilanka tour won all matches (Captain)
1981	Common wealth Volleyball championship (London, U.K.) Won Bronze Medal
1982	Selected for Delhi Asiad Coaching camp
1987	Visited USA and Canada
1993	President Police medal (for Meritorious services)
1993	Chief coach Indian police Volleyball team
1995	Yash Bharti Award
1996	Atlanta Olympic (Security Officer)

1999	President police medal (for Distinguished Services)
2005	Member convener sports policy
2006	Member Selection committee for Rani Laxmi Bai Award
2007	Member Selection committee for Indian team
2008	Member Selection committee Maharani Ahilyabai Holker Award
2009	Member , reception committee, World Volleyball Championship
2010	Member Selection committee Sports College
2011	Observer ,Panchayat Yuva Krida Khel Abhiyan
2012	Founder ,Maa Matrabhumi Yuwa Khiladi ,Pratibha Protsahan Samiti.